

## **VISION PLAN—2019-2020**

**to proclaim the year of the Lord's favor. Luke 4:19**



## **New Vision for White Lick**

### **Deep: Living into Christ's call for us and our neighbors.**

Ephesians 3:16-18 (NIV)

<sup>16</sup> I pray that out of his glorious riches he may strengthen you with power through his Spirit in your inner being, <sup>17</sup> so that Christ may dwell in your hearts through faith. And I pray that you, being rooted and established in love, <sup>18</sup> may have power, together with all the Lord's holy people, to grasp how wide and long and high and deep is the love of Christ,

Our New Beginnings discussions during 2019 led us into a new vision. The input of the congregation throughout the process was essential to keeping focus on those issues that mean most to our faith community while expanding to deepen our commitment and service to our neighbors in Hendricks County and beyond.

#### **Guiding Scripture for our Leaders:**

##### **Luke 5:1-11 (NIV) Jesus Calls His First Disciples**

One day as Jesus was standing by the Lake of Gennesaret, the people were crowding around him and listening to the word of God. <sup>2</sup> He saw at the water's edge two boats, left there by the fishermen, who were washing their nets. <sup>3</sup> He got into one of the boats, the one belonging to Simon, and asked him to put out a little from shore. Then he sat down and taught the people from the boat.

<sup>4</sup> When he had finished speaking, he said to Simon, "Put out into deep water, and let down the nets for a catch." <sup>5</sup> Simon answered, "Master, we've worked hard all night and haven't caught anything. But because you say so, I will let down the nets."

<sup>6</sup> When they had done so, they caught such a large number of fish that their nets began to break. <sup>7</sup> So they signaled their partners in the other boat to come and help them, and they came and filled both boats so full that they began to sink.

<sup>8</sup> When Simon Peter saw this, he fell at Jesus' knees and said, "Go away from me, Lord; I am a sinful man!" <sup>9</sup> For he and all his companions were astonished at the catch of fish they had taken, <sup>10</sup> and so were James and John, the sons of Zebedee, Simon's partners. Then Jesus said to Simon, "Don't be afraid; from now on you will fish for people." <sup>11</sup> So they pulled their boats up on shore, left everything and followed him.

#### **Guiding Scripture for Implementation of the Vision**

John 21:15-17 (NRSV)

<sup>15</sup> When they had finished breakfast, Jesus said to Simon Peter, "Simon son of John, do you love me more than these?" He said to him, "Yes, Lord; you know that I love you." Jesus said to him, "Feed my lambs." <sup>16</sup> A second time he said to him, "Simon son of John, do you love me?" He said to him, "Yes, Lord; you know that I love you." Jesus said to him, "Tend my sheep." <sup>17</sup> He said to him the third time, "Simon son of John, do you love me?" Peter felt hurt because he said to him the third time, "Do you love me?" And he said to him, "Lord, you know everything; you know that I love you." Jesus said to him, "Feed my sheep.

## **Celebrating our Servanthood**

### **Why and Who we serve as a Faith Community**

#### **James 2:14-17 Life Application Study Bible**

What good is it, dear brothers and sisters, if you say you have faith but don't show it by your action? Can that kind of faith save anyone? Suppose you see a brother or sister who has no food or clothing, and you said, "Good-bye, stay warm and eat well"—but then you don't give that person any food or clothing. What good does that do? So you see, faith by itself isn't enough. Unless it produces good deeds, it is dead and useless.

#### **We exist to serve**

"Why"? White Lick has had a viable presence on the corner of 575 and 600 for almost 170 years. Those who have worshipped at our church have come to love it; those who pass by recognize us as that church in the wildwood. Why are we still here today?

- We exist to honor and praise God, our Creator, Sustainer, and Redeemer.
- We exist to be the hands and feet of Jesus; to be the "salt and light" in a troubled world; to spread the Good News and minister to all who need spiritual connection and life-giving support. At work, at play, at school, at home—our mission is to serve Christ where God has placed us.
- We exist to be a "sanctuary" where everyone can feel the love and acceptance of a caring community of disciples of Jesus.
- We exist to gather with friends to worship, refresh, renew, reenergize and deepen our relationships with one another.
- We exist to be the voice of Christ for those who are hungry, thirsty, the stranger, the sick, the prisoner, the least of God's kingdom. (Matthew 25: 37-45)
- We exist to instruct others in ways to change their lenses in how they view and react to the world.

## **Celebrating White Lick Strengths Who we are as a Faith Community**

These values represent who we are at White Lick and what we want to be in the future. The list was compiled from discussions held during the spring and summer of 2019 as part of the New Beginnings Initiative. Scriptures used in this plan were contributed by the session elders.

### **Matthew 5:13-16 (NRSV) Salt and Light**

<sup>13</sup> “You are the salt of the earth; but if salt has lost its taste, how can its saltiness be restored? It is no longer good for anything, but is thrown out and trampled under foot.

<sup>14</sup> “You are the light of the world. A city built on a hill cannot be hid.

<sup>15</sup> No one after lighting a lamp puts it under the bushel basket, but on the lampstand, and it gives light to all in the house. <sup>16</sup> In the same way, let your light shine before others, so that they may see your good works and give glory to your Father in heaven.

**Faith-filled Disciples:** God has a purpose where He has placed us. We are Spirit-driven disciples who walk with Christ into the world to glorify God. We value opportunities to go deep and wide in the Word through Sunday morning worship, children’s church, and Bible study. Worship is not a production at White Lick but an invitation to enter into a time with God. Thoughtful learning and spiritual growth are encouraged. Members are challenged not to blindly accept dogmatic doctrine but to learn how to read scripture, interpret its contextual meaning and apply to daily life. Scripture is used to clarify and broaden our understanding of what it means to be Christ’s disciples; not be narrowing and selectively exclusive.

### **Traditional and historical nature of the church facility**

White Lick is a tradition on the corner of Hendricks county roads 575 and 600 where it has stood since the first structure was built in 1857. To the casual passer by, the church has a quaint, rural look. Simplicity of the sanctuary lends to peaceful contemplation. The outdoor worship center is appealing to those seeking a quiet place in a natural setting. The rural setting in the midst of the growing Indianapolis metro area lends well to its name of “the Church in the Wildwood”. Recognizing its traditions, we strive to honor the past yet remembering the Presbyterian history of being *reformed but always reforming* to adapt to current conditions and needs of our surrounding communities.

**Hospitality:** We welcome the stranger whose name is remembered and feels comfortable within the church. Genuine in treatment of others; what you hope to find in a loving church. Our faith presence in Hendricks county enables us to extend the hand of hospitality and friendship; guiding and encouraging others in their discipleship journeys.

**Fellowship:** Warm, secure, stable, acceptance with a no judgement; family feel. Sunday meals provide time to get to know newcomers and catch up with old friends. Inclusiveness—there are no factions vying for power or attention to their own personal agendas.

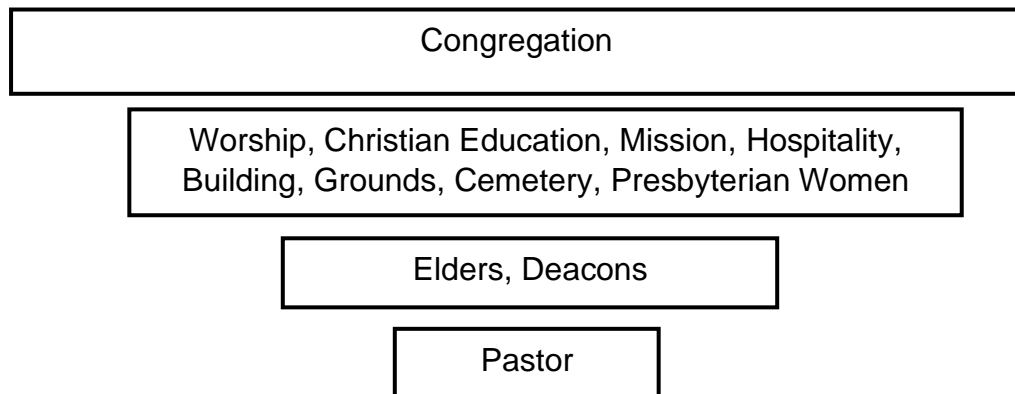
**Compassion:** We recognize that everyone is a unique beloved child of God. We exemplify compassion through praying and caring for each other; looking out for the welfare of each other and those served by the church. Willingness to contribute goods, supplies, and financial support for mission efforts such as food for school children during breaks, Christmas giving tree, Sheltering Wings.

**Shared Leadership:** Shared voices between pastor and congregation; men and women share responsibilities and decision making is maintained within church functional units. Through its history, White Lick has had strong leadership that has kept the church viable even during times when pastoral leadership was minimal. Thus, the church has maintained its focus on Jesus as the church’s ultimate leader, not the pastor. A true priesthood of all believers.

**What are our best resources?**

- People – caring and supportive; untapped spiritual gifts for ministry.
- Pastor—Grounded in God’s Word. Committed to continuing Jesus’ ministry. Vitality. Willingness to try new things. Go to attitude. Pastoral care.
- Building—Well kept in a natural setting. Traditional in image. Inviting.
- Financial sustainability—challenges which can be overcome.
- Spiritual—traditional worship; strong faith; prayer warriors.
- Technical—ability through website and Facebook (and potential of Twitter, Snapchat et. al.) to communicate with the greater community

**Current leadership structure of White Lick Presbyterian Church**



Instead of a top down structure with the pastor on top as identified in many management systems, this model represents the participatory leadership style of Jesus.

*(Lead Like Jesus by Ken Blanchard)*

## History of White Lick Presbyterian Church

Established 1851

### **Genesis 12:1-2 (NRSV)**

The Call of Abram

12 Now the LORD said to Abram, "Go from your country and your kindred and your father's house to the land that I will show you.

<sup>2</sup> I will make of you a great nation, and I will bless you, and make your name great, so that you will be a blessing.

This "promised land" in Indiana for the settlers in the early 1800s was very different from their native countries of Germany, Ireland, England, and Scotland. Even those settlers who had early roots in the original thirteen colonies found the land a wilderness of few trails, swamps and dense woods where one could easily become lost.

When the first white men entered Indiana, they found a large band of Native Americans camping on the White Lick and Eel rivers. The Native Americans called White Lick River *Wape-ke-way* meaning *white salt*. The settlers learned to hunt and fish from these friendly native dwellers.

In 1828 Nathaniel L. Pierce received a land patent from the United States Government for 80 acres and gave a small portion for our cemetery in 1837. In 1833, Mr. Pierce received a land patent for an additional 320 acres and eventually donated the small corner where the first church would be built.

Mrs. Jane Barlow is credited with bringing together those early Presbyterians for worship. She was the wife of Enoch Barlow who settled along the banks of White Lick Creek in 1828. Although an official member of the Danville Presbyterian church she would find a minister to preach in her home, schoolhouses, or barns in the area. God had a plan for this small corner of Hendricks County when twelve neighbors of Scotch-Irish descent met in the kitchen of William and Juan (pronounced Joan) Patterson to organize White Lick Presbyterian. Just like the earliest Christians, this band of faithful Presbyterians met in a house church and called The Reverend B. F. Cole to be their first pastor in 1851.

As the congregation grew, a more permanent meeting house was needed. William Ragan built the first wood framed church in 1857. The church was dedicated on August 18, 1857 with a "gracious revival" that doubled the membership of the church. Rev. H.L. Dickerson became the pastor. Fondly called Uncle Henry, he traveled on foot from home to home, staying in whatever home he ended his day. Uncle Henry served many small Presbyterian churches in the area as well as Indianapolis. Rev. Dickerson served the congregation for over 40 years at which time he was elected Pastor Emeritus. Many of the founders of our church are buried in the cemetery including Rev. Dickerson.

Throughout most of its early history, the congregation was small but sustained itself with pastors who served multiple churches in the area. Worship was held at various times from Sunday morning to Sunday evening and even on Wednesdays depending on the availability of the preacher. Periodic week-long revivals increased the membership.

When a tragic fire destroyed the frame structure in the late 1870s, the congregation built the present brick sanctuary and dedicated it in 1881. The clay for the bricks came from the banks of White Lick Creek. In 1956 a fellowship hall and a kitchen were added with central heating and plumbing. And in 1968 Sunday school classrooms and an office were built and the sanctuary remodeled.

It was not until after World War II that our church began to “increase in numbers and prosper”. Pairs and Spares and the Booster Club were active adult church groups who helped with finances and cared for our church facility and cemetery. There were family camping trips to McCormick’s Creek and Turkey Run State Parks, Fall Festivals, an active youth group led by Carol McGowan, fish fries, chili suppers, plus the two additions to the north end of the sanctuary. Like today, parking was a problem and periodically discussed by session.

Jesus told the parable of a nobleman who entrusted a valuable gift to his servants telling them to “do business until I come back”. (Luke 19:11-27) Jesus has been generous in the gifts he has give to White Lick. Some gifts were invested wisely while at other times, the gifts seemed hidden within the church walls. The 1980s were a time when the gifts seemed sparse. These were some of the more difficult days of the church. The worshipping membership had dwindled to less than a dozen, but the faithfulness of those few saints really kept the doors open. Saints like Jerry Poole and Amy Chambliss understood that God had a purpose in White Lick being here.

And the church began to change. New families arrived. New ministries were started. New leadership came and stayed and left its mark: Rev. Don Boebenger, Rev. Joy B. Goehring, student pastors like Glenyce Grindstaff, Paula Mann and Aby and Melissa Bauzo; and, the most recent pastor Rev. Dr. Daren Hofmann. White Lick Presbyterian began to mirror some of the changes that were happening in the community around it.

Through much prayer and discernment, the congregation took a major leap of faith and built the current education wing in 2004. The church grew not only in numbers but with members whose spiritual gifts strengthened our ability to Worship—Grow—Serve. We became an equipping church to Prepare and Send Spirit-filled disciples who walked with Christ into the world to glorify God. Like many small churches, especially those with a rural history, relationships are the core of keeping the church healthy and active.

With more space and steady leadership, many of the leaders today arrived after the construction in 2004. They were drawn to the Church in the Wildwood by faithful leaders of that time. Leaders like Jerry and Martha Poole, Sam and June Thompson, Bill and Rhea Fischer, Carol McGowan, Austin and Eileen Williamson, Edie Goad and Linda Nicely, the Comptons, the Kirbys, the Botzums, the Krohnes, the Harmons, the Foudrays, the Freemans, the Henrys, the Rodgers, and so many more.

Those that came were often asked how they found White Lick as we are not located on a main road. Many said they got lost trying to find another church or just drove past one day and found the church to be “calling to them.” So the joke became “God called us to

White Lick because you couldn't find the place any other way." A recent visitor indicated she found the church by following the signs for the chili supper! Although Jesus went to the big city of Jerusalem, his ministry was centered off the main roads and paths where the people lived. Our sacred space is similarly located where the people live.

White Lick has been impacted by many of the same issues that affect all congregations:

**Jeremiah 29:11 (NRSV)**

<sup>11</sup> For surely I know the plans I have for you, says the LORD, plans for your welfare and not for harm, to give you a future with hope.

- Children and youth have grown up; graduated; and are slow to be replaced by a new generation. Once three Sunday School classes divided by grade levels are down to one multi-age class, yet we have seen a recent increase in young families who appreciate the small church environment.
- Membership has decreased due to deaths; families transferring to larger churches with active youth programs; and normal attrition as individuals and families move out of the area.
- The mortgage on the addition will end mid-2022 thus freeing funds for other mission initiatives. We continue to break even or have slight surpluses and keep a full-time pastor, but the numbers continue to be tight every year.
- Thriving adult Bible studies and Sunday morning discussions have been reduced to one group that meets at a retirement center in Avon. Various efforts have produced little interest in adult Christian education.
- Active ministry teams that did the work of the church have dwindled down to a few members who keep the various groups functional but not always effective.
- Like many small churches, programs and projects are dependent upon the availability of leadership. To implement this plan, some less productive programs will need to be evaluated and/or dropped.
- Recruitment of new elders, deacons, and other church leaders is resulting in *recycling* leaders who have been in the same position for many years or leaving some positions vacant.

Although internally, White Lick has struggled, its outreach has grown significantly.

- Parents of Addicted Loved Ones meets every Thursday evening. Organized initially as the first group outside of the state of Arizona, Indiana now has a dozen groups and PAL has expanded into twenty-three states thanks to the discipleship of two White Lick women.
- The congregation is very generous in supporting special projects such as contributing food for children during school breaks; annual Christmas giving tree; providing school supplies for local school children and the Dorcas basket project which supplies Vacation Bible School materials in the Dominican Republic.
- Supporting Sheltering Wings, a domestic abuse residential center in Hendricks County, with financial support, food and hygiene items and gift bags for women for Mother's Day.



- Monthly visits to Good New Mission to serve a meal and to Indy Love Train, a consortium of churches serving the homeless in Indianapolis with food and clothing;
- Increasing involvement in local events: Brownsburg Christmas and Fourth of July parades, Halloween Trail and Treat at a Brownsburg Park, and National Night Out in Avon.
- The annual Summer dessert fest and Fall chili supper which is supported by the surrounding area who love any chance to eat out at a local church or fire department fund raiser.

White Lick is also active in the more global ministry of PCUSA. White Lick participates in the four special offerings each year and pays its annual per capita. The church is active in Whitewater Valley Presbytery with both its pastors and elders serving on committees and in leadership positions including commissioners to General Assembly. The pastor and elders attend the quarterly presbytery meetings. One ruling elder is very active in the presbytery's Hispanic Ministries; while another Presbyterian spends more Sundays in missions abroad than in her home church.

Perhaps one of the main unifying factors of the congregation is summarized in the Halverson Benediction which is recited at the end of each worship service. More than any other part of worship this benediction affirms our discipleship responsibilities:

You go nowhere by accident. Wherever you go, God is sending you. Wherever you are, God has put you there. God has a purpose in your being there. Christ who indwells you has something He wants to do through you, where you are. Believe this and go in His Spirit's grace and love and power.

We give thanks that many loving, faithful servants invested their gifts in our church. We are here today because of those investments.

**Ministers:** All the People of the Congregation

**Pastors:**

Rev. B. F. Cole	1851-1857	Rev. Bruce Brown	1966-1986
Rev. Henry L. Dickerson Pastor Emeritus	1857-1898	Rev. Larimore Wickett	1987-1989
Brother Black	1900-1905	Rev. Dr. J. Donald Boebinger Pastor Emeritus	1990-1997
Brother Harris	1905-1910	Rev. Dr. Rebecca Pritchard Interim Pastor	1997-1999
Rev. Jabush	1910-1911	Rev. James Snyder Interim Pastor	1999
Rev. Fowlers, Rev. Beasons, Rev. Mullin, Rev. Blair, Rev. Duncan		Rev. Joy Bilger Goehring	2000- 2010
		Rev. Kimberly Olson Interim Pastor	2010-2012
Rev. Davis	1911-1947	Rev. Dr. Daren Hofmann	2012-2019
Rev. Ira Stock	1947-1961	Interim Pastor	2020
Rev. Black	1962-1963	Pastor	2021
Rev. Parlett	1963-1965		
Ronnie Mitchell	1965-1966		



**Bringing home the Bell** as written by Greg Foudray  
In the late 50's early 60's the White Lick Presbyterian Church sanctuary was reconfigured with the pulpit and riser on the south side of the building and the outer vestibule behind the pulpit was closed and used for storage. A good number of articles accumulated in the vestibule over the years. My father (Edgar Foudray Jr. aka "Bud" Foudray) returned home from a work session at the church one summer night with his

pickup truck full of things which the men at the work session had decided to throw away to clean up the vestibule. Among the items were two church bells. One was a large bell which was totally cracked and only made a dull thud when struck. This bell went to the scrap metal pile. My father kept a smaller #3 bell; took it to a welding shop to have a yoke built; and mounted the bell on a post next to the back porch of his home 4 miles east of the church. For 30+ years my mother (Kathryn Courtney Foudray) would ring the "dinner bell" to call my father in for dinner, supper, or an important phone call. In 2015 my late neighbor, Rick Bridwell, restored the bell having it sand blasted and meticulously painted it with shiny copper paint; then helped me mount it at the top of an old telephone pole at my farm. The bell was mounted near the south sanctuary steps in Oct. 2019. Shown above are the Foudray extended family presenting the bell to the church.

## New Beginnings with a New Vision

During 2018 and 2019, Whitewater Valley Presbytery intentionally focused its meeting learning sessions on building congregational vitality which is also one link of PCUSA's Matthew 25 Initiative. Churches were invited to deepen their exploration with financial support to employ a consultant. The consultant would come to the participating local churches to provide a demographic analysis of both the church and the surrounding community. The session at White Lick decided to participate.

### Process:

- A consultant from Hope Partnership for Missional Transformation met with the session in February 2019; toured the local area; and collected information on our church.
- An appreciative inquiry session followed with elders, deacons, and other leaders.
- In the Spring and Summer, small focus group meetings were held during Sunday lunch. Led by session elders, targeted questions dug deeper into who we are as a church and the vision for whom we should become.
- Throughout this period, the session dedicated half of each monthly meeting to continued discussion as all the collected data and information was sifted through and winnowed down to five primary focus themes.
- At the October 2019 session meeting, the new vision statement *Deep: Living into Christ's call for us and our neighbors* was drafted.
- A leadership meeting on November 2 refined the focus areas for 2020.
- Throughout the Fall, Pastor Daren preached from selected texts from the Book of Jeremiah culminating in the New Covenant sermon given on November 3.

Thus, this document is the result of a collective effort of the entire congregation through months of discernment guided by the Holy Spirit.

The consultant's report optimistically describes the potential of White Lick Presbyterian Church:

White Lick Presbyterian Church is in most ways an ideal model of a thriving small, rural church. With a delightful, picturesque and well-maintained building in a beautiful location, this church compels the heart to sing, "Come, come, come to the church in the wildwood.."

This congregation is currently in a promising place in their life-cycle, with some recent growth, and in recent years supporting the budget entirely on congregational giving. Recent upgrades to flooring and fresh paint speak of a church positive about its current situation and its future. The Appreciative Inquiry session also revealed a church filled with positive, appreciative, close-knit members with plenty of enthusiasm and hope.

The church sits between Brownsburg and Avon on a country road. Although not on a main thoroughfare, it is passed constantly by residents of the surrounding subdivisions. Both Brownsburg and Avon have experienced massive growth over the last fifteen years with more growth predicted. The schools are exploding and continually building.

Hendricks County is one of the fastest growing counties in Indiana as the Indianapolis metro-area suburbs sprawl westward. School enrollment is seventh in the state. Median household income is around \$75,000. Almost 94% of the adults in the county have at least a high school degree with 35% having a bachelor's degree or higher. The demographics presented in the consultant report suggest that White Lick could double in size.

### Result

From all the discussions and the information in the consultant's report, five major themes surfaced as follows:

1. School Children in Hendricks County (Avon/Brownsburg); especially food insecurity
2. Hospitality and Fellowship – Strengthening what we do best that can be converted to service)
3. Families - Social events and outreach expansion
4. Singles and Seniors – Support and care
5. Focus and/or Expansion of current mission ministries (Deeper and Wider)
  - Domestic Violence in Hendricks County (Sheltering wings)
  - Poverty/Homelessness/Jobs in Hendricks County (Family Promise)
  - Addiction in Hendricks County (County Services/PAL)
  - Current other mission efforts at White Lick: Good News Mission, Sheltering Wings, Get Real

A more detailed description of each of these themes can be found in the Appendix. Again, these themes are a convergence of a much larger database of information which has been archived for further use as this plan expands and evolves during the interim period and the first year(s) of the new pastor.

## Living into Christ's call 2020

### 1 Peter 4:10-11 (NRSV)

<sup>10</sup> Like good stewards of the manifold grace of God, serve one another with whatever gift each of you has received.

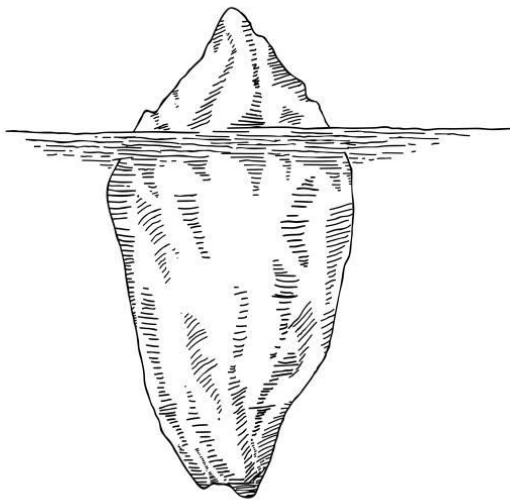
<sup>11</sup> Whoever speaks must do so as one speaking the very words of God; whoever serves must do so with the strength that God supplies, so that God may be glorified in all things through Jesus Christ. To him belong the glory and the power forever and ever. Amen.

At the November 2, 2019 Leader's meeting of deacons and session elders, the five themes were narrowed to three with specific initiatives suggested for implementation. This mission plan is a long-term approach to going *Deep* within ourselves and with our neighbors. The analogy of an iceberg with more below the surface than above reinforces the extent to which each of these topics can be approached.

It is affirmed that many of our members are actively involved; AND, have a passion for mission and ministries not listed in this plan. Their continued involvement and work are acknowledged and blessed. With the resources available at White Lick, our collective support for 2020 will be directed toward:

- Singles and Seniors
- Families
- School children

Under the coordinated leadership of the session elders, each theme will be pursued over a trimester: Jan-April; May-August; September-December. Worship, Christian Education, Mission, and Fellowship/Hospitality will jointly plan and implement each theme. There are still decisions to be made regarding implementation which certainly will be adjusted as 2020 progresses. Listed below are the places our congregational discussions suggest our functional units begin to explore and develop implementation strategies.



current initiatives, activities, events;  
our current level of knowledge/  
understanding;  
current level of involvement by  
congregation, leaders, ministries,  
groups;

---

increased knowledge/understanding of  
issues, problems, environment  
surrounding the selected groups;  
building relationships with members of selected  
groups;  
building relationships with  
organizations that support selected groups in  
Hendricks County;  
understanding the root causes of the structural and  
systemic problems impacting the selected  
groups;  
becoming an active voice for change within the  
socio/economic/political systems

## **“Tend My Sheep” Singles and Seniors – Support and care January-April 2020**

The first of every year not only brings New Year’s resolutions but putting life and family care systems in place like setting up the tax folders for the year, paying insurance premiums, etc. Taking advantage of the new year and winter months, Christian Education will present a series of workshops and informational events called *Life’s Seasons* that do not just explore elder care issues but issues of importance to all adults. Worship themes will reinforce the caring for adults with special needs; as well as integrating hospitality and mission.

### Topics to increase our knowledge and understanding: (open to public)

Attorney specializing in wills, trusts, guardianships for dependent children, POA, living wills, probate, health care rep. etc.

Long term care insurance for long-term peace of mind;

Funeral pre-planning, costs, burial expenses;

Planning your church funeral; what your children and pastor need to know;

Negotiating elder care needs and mental capacities; transitioning alternatives for care givers;

Writing your legacy story;

Electronic pitfalls—scams, phishing, security breaches directed at the elderly;

Guarding your finances; monitoring your elderly parents/grandparents finances;

Finding help—Senior Citizens Center, CICOA (Hendricks County churches; deacon training)

Elder abuse—what it is; how to report.

### Activities:

Workshops on topics listed above

Personal records list of family members, contacts, physicians and medical records, prescriptions, location of records like insurance policies, birth certificates, marriage license, etc. (already available)

Meal Swaps

Caregiver support group

### Building Relationships

Hendricks County Senior Services Center

Increase our involvement with our members who are in nursing homes or homebound; be vigilant for signs of improper care and report

Set up a system to connect with those living alone such as Constant Contact, an automated messaging system

### White Lick Resource Persons

Carol Johnson

Beth McGuire

White Lick Deacons

### Singles and Seniors Implementation Schedule

Month	Worship	Mission (internal & outreach)	Christian Ed	Fellowship
January	Bible study @ Crestwood	Build Relationships: Senior Center Survey interest for a care giver support group	Workshop	Survey interest for Meal Swaps Pursue system i.e. Constant Contact
February	Black History Month Bible study @ Crestwood	Organize & plan Find leadership	Workshop	Organize Meal Swaps w/leader
March	Lent Bible study @ Crestwood	Begin care giver support group	Workshop	Begin Meal Swaps
April	Easter Bible study @ Crestwood			
May	Pentecost Bible study @ Crestwood			
June	Bible study @ Crestwood			
July	Bible study @ Crestwood			Dessert Fest
August	Bible study @ Crestwood			
September	Bible study @ Crestwood Hispanic Heritage Month			Gospel quartet?
October	Bible study @ Crestwood			Masquerade Party
November	Bible study @ Crestwood			Chili Supper
December	Advent Bible study @ Crestwood			Hanging of the Greens; transportation to Advent & Christmas services

## **“Tend My Sheep” Reaching Out to Families Social events and outreach expansion May-August 2020**

Since many of our current ministries involve families, the leaders at the November 2 retreat moved Focus theme #5 here. **Focus and Expansion of current mission ministries** (Deeper and Wider)

- Domestic Violence in Hendricks County (Sheltering wings)
- Poverty/Homelessness/Jobs in Hendricks County (Family Promise)
- Addiction in Hendricks County (County Services/PAL)
- Current other mission efforts at White Lick: Good News Mission, Sheltering Wings, Indy Love Train, Get Real

### Topics to increase our knowledge and understanding:

Education for our church members **about poverty in the affluent suburbs** . Suburban poverty is different than poverty in a poor community. Frequently hidden behind closed doors and embarrassing to admit how close to living on the edge, stressed families can easily move deeper into debt. How this stress contributes to domestic violence, homelessness, and drug addiction. Researching the structural and systemic impacts of poverty in Hendricks County both suburban and rural.

### Activities

Speakers and study groups on poverty issues.

Speakers and study groups on structural racism as a contributing cause to systemic poverty. Expansion of our current family offerings to our neighbors through invitation and better communication. More activities such as a summer barbeque, ice cream social, games and movie nights.

Mission Team make decisions on which existing mission ministries to expand or reduce participation to allow for new initiatives and expenditure of time and financial support. Looking at food deserts; gas stations that carry/serve food items.

### Building Relationships through active engagement outside the church

Pizza, games nights, BBQ picnic, movie, Indians baseball game

Family Promise

Sheltering Wings

Hendricks County Health Partnership

### White Lick Resource Persons

Mary Mitchell

Diane Buxton

Cara Miller (Sheltering Wings facilitator)

Beth McGuire (communication)



**Reaching out to Families – Social events and outreach expansion  
Implementation Schedule**

<b>Month</b>	<b>Worship</b>	<b>Mission</b>	<b>Christian Ed</b>	<b>Fellowship</b>
January	Sunday School	Set priorities amongst current mission efforts PAL		
February	Black History Month Sunday School	PAL		Fat Tuesday pancake supper
March	Lent Sunday School	PAL		
April	Palm Sunday Easter	PAL	Research suburban poverty issue; Family Promise	Palm Sunday egg hunt
<b>May</b>	Sunday School Pentecost	PAL	Find speakers and resources Study initiatives	Mother's Day gifts to Sheltering Wings; PW Spring Banquet
<b>June</b>	Outdoor worship Sunday School	PAL		Church picnic
<b>July</b>	Outdoor worship Sunday School	PAL Brownsburg 4 <sup>th</sup> parade		Dessert Fest
<b>August</b>	Outdoor worship Sunday School	PAL		National Night Out
September	Outdoor worship Sunday School Fall kick off Hispanic Heritage Month	PAL		Gospel quartet?
October	Sunday School	PAL		Masquerade Party
November	Sunday School	PAL		Chili Supper
December	Sunday School Christmas pageant; Advent candle lighting; Christmas services	PAL Brownsburg Christmas parade		Gingerbread House decorating Hanging of Greens;

**“Feed My Lambs”: Supporting School Children (Avon/Brownsburg);  
Feeding families through our community schools  
September-December 2020**

Fall is always a gear up time as school begins and is also the time of year when White Lick is most active in mission support of food pantries and providing Christmas gifts for families. For 2020 our efforts will be directed at building a better relationship to increase support to the Avon School District; and, as resources are available, expand into the Brownsburg School Corporation.

Building Relationships

During the first part of 2020, connect with the appropriate persons within the designated school corporation(s) to determine their needs and how best to participate.

As appropriate, build long-term relationships with families throughout the year, not just during the holidays. (If schools cannot provide family names, connect with Township Trustees for suggestions.)

Hendricks County Health Partnership and associated support agencies/organizations

Topics to increase our knowledge and understanding:

Research summer lunch programs with possibility of participation with other partner churches. providing transportation to lunch sites or delivery to neighborhoods for 2021?

Better understanding of food issues faced by children.

Impact on brain development and learning of children of families in crisis.

Activities

Consolidate all White Lick food pantry collections and dedicate to school food pantries.

Collect appropriate food items for Fall, Christmas, and Spring Breaks.

Sew “food backpacks” for Brownsburg Schools for children to take home weekend food items.

Collect school supplies during July.

Take Sunday leftovers to families we are supporting long-term.

Actively campaign for another grocery store in Brownsburg such as Aldi’s that offers quality but lower cost food.

Pay off school cafeteria food debts for needy children.

Tutoring, foster grandparents

Sponsor a writing contest with a prize on a topic like “being kind”;

White Lick Resource Persons

Terry George and daughter Kelly

Cassie Brooks

Angie Cooper

### Supporting School Children Implementation Schedule

<b>Month</b>	<b>Worship</b>	<b>Mission</b>	<b>Christian Ed</b>	<b>Fellowship</b>
January				Survey interest in sewing food backpacks
February	Black History Month			
March	Prayers for food to pantries	Build relationship with school corp. determine needs		Spring Break food collection
April			Food insecurity included in suburban poverty	
May	Pentecost		Food insecurity included in suburban poverty	
June				
July		Backpack and clothing collections		
August				
<b>September</b>	Hispanic Heritage Months			
<b>October</b>	Prayers for food to pantries			Fall Break food collection
<b>November</b>				
<b>December</b>	Prayers for food to pantries			Winter Break food collection Christmas giving tree

**2 Corinthians 9:7 (The Message )**

I want each of you to take plenty of time to think it over, and make up your own mind what you will give. That will protect you against sob stories and arm-twisting. God loves it when the giver delights in the giving.

This plan is ambitious and challenging. It will require a commitment from the entire congregation as well as its leadership to ensure implementation, not just in 2020 but in many years to come. This plan will be adjusted to meet changing conditions. Some ideas will be successful and be integrated into the life of White Lick. Some ideas will fail regardless of the amount of effort given. May we all dedicate our hearts to carry forth the love of Christ as we seek to serve all God's beloved children through this plan.

This Vision Plan was adopted by the session of White Lick Presbyterian Church on November 19, 2019

## APPENDIX

### **“Feed My Lambs”: School Children in Hendricks County (Avon/Brownsburg); especially food insecurity**

School Children have been a focus in almost every discussion. Although we live in a suburban area surrounded by new housing developments, our schools contain a significant number of children requiring support services. Approximately 25% of the children in the Brownsburg School Corporation receive free or reduced-price meals. Almost 31% of the children in the Avon School Corporation receive free or reduced-price meals.

#### What White Lick is currently doing directed at children:

- Periodic collection of food for school breaks (Fall, Christmas, Spring)—Avon Middle School
- Christmas giving tree where gifts are provided for children of families from Avon Middle School

#### Ideas generated from all the discussions:

- More consistent collection of food under a volunteer leader for each break.
- Instead of dividing church resources of financial support and food to various other places i.e. local food pantry—concentrate all efforts on providing food for the designated school pantries.
- Expansion into Brownsburg School District
- Weekend food distribution: In Avon School System kids must bring in their “food backpack” on Fridays to receive any food for the weekend. Most kids seem to comply. In Brownsburg, kids receive their food in a simple clear plastic bag as the kids forget or can’t find their “food backpack”. Suggestion to make a simple cloth bag with a string tie and strap to receive food allocation. The bag can be rolled up and kept in child’s regular backpack or given a new one.
- Instead of providing blessing bags for homeless, be more intentional about providing blessing bags with stocking caps, mittens, scarves, socks, and actively provide coats and clothing for schools who operate clothing pantries.

### **“Feed My Sheep” Hospitality and Fellowship – Strengthening what we do best that can be converted to service**

The word “immigrant” is a hot button word today; filled with political and religious connotations. Consider this definition:

Someone displaced from their known support system and living in new surroundings. Some synonyms for immigrant can be: newcomer, settler, new arrival, outsider, stranger, nonnative as well as migrant, emigrant, foreigner, or even expatriate. At some time or another, each one of us can be named an “immigrant”.

In ancient times, a traveler or newcomer was welcomed with great hospitality. The person was invited to eat; even if food was scarce it was shared. In the Book of Acts, we see the formation of deacons to care for the people and see that they received their fair share of food. Carrying on the tradition today, all family gatherings including our church family feature food as a basic form of hospitality and fellowship.

#### What White Lick does now:

- Sunday lunches
- Chili supper and dessert fest open to the public
- Deacons' ministries
- Fellowship events like the Masquerade Party or Gingerbread house decorating

#### Ideas generated from all the discussions:

- Better process for following up with members who have been absent for a period of time.
- Better process for integrating new members into the life of the church.

#### **“Tend My Sheep” Family Orientation - Social events and outreach expansion**

Currently, White Lick does not have many families with children as our former families have now graduated and moved on. Those families who are now attending have expressed love for who we are as a small, welcoming church. White Lick does not have the amenities of the larger churches with gyms and multiple children and youth programs; nor, do we intend to try to compete or mimic. We have our own identity that attracts families with similar interests.

#### What White Lick does now to involve families

- Opportunities to participate in church social events, in worship, and grow in a small church environment where you are known and accepted.
- Compassion for those with disabilities.
- Solid Christian Education for children in worship and Sunday School
- Chili and dessert fest attracts families for food and fun; chance to participate in cooking, serving, cleaning up.

#### Ideas to strengthen and attract families

- Better ways to communicate who we are and what we have to offer to families new to the area.
- Different venues, type(s) and time(s) of worship to attract families with busy weekend schedules.
- Offer free opportunities or experiences:
  - Mitch Rieman has offered to give Saturday morning piano lessons if church pays the \$20/per student fee;
  - Family exercise classes;
- Expand our family events during the year to welcome our neighbors such as the Gingerbread House decorating in December

#### **“Tend My Sheep” Singles and Seniors – Support and care**

Our congregation has a lot of gray heads and with aging comes the death of a spouse or companion. These persons are often a strength in a church dedicating their time and energy to church programs and events as well as their financial contributions. Singles of any age and seniors often face great challenges in living alone; needing help with home maintenance; a lift to the grocery store; childcare support; or just a simple conversation to brighten a dreary day.

White Lick age groups reported to the New Beginnings consultant:  
 N= 109 (87 members + regular non-member participants)

ages: 0-10	11-32	33-53	54-69	70-79	80+
8	12	18	23	33	15

What is White Lick currently doing for its singles and seniors

- Sunday lunches generally have leftovers that go home for an extra meal.
- Deacon community care groups seek to keep track of our elderly and their needs and provide meals (when known) if someone is sick; recovering from the hospital; or other short-term need.

Ideas generated from all the discussions:

Singles Ministry: Meal Swaps Those who would like to participate create and bring meals to swap (2 servings per swap).

Better knowledge of what the Hendricks County Senior Citizens Centers offer in support. Organize a meeting with Marina Keers the executive director of the Hendricks County Senior Services Center. Make it an event open to deacons or elders in other churches who have responsibilities for their senior members.

Projects Senior Services could use help with:

Cat and dog food. They know of seniors who make sure their dog or cat is fed before they buy groceries for themselves. Small bags only or put smaller amounts in zip lock bags as large bags may be too heavy or cumbersome for a physically challenged person.

Boost or Ensure. Doctors frequently recommend for seniors who have nutritional deficiencies. These products are expensive for many senior budgets.

Depends. Large or extra large sizes

Any of these items can be dropped off at the senior center in Danville.

Start a small group for care givers.

Organize daytime activities for our seniors; provide transportation; financial assistance to attend events.

Invite nursing home to bring a shuttle bus of residents to hear the Gospel Quartet or other special program.

**“Feed My Sheep: Focus and Expansion of current mission ministries (Deeper and Wider)**

Through the years, White Lick has been involved in ministries and financially supported directly through church giving or the giving of the deacons or Presbyterian Women. These ministries currently include:

- Good News Mission
- Sheltering Wings
- Parents of Addicted Loved Ones
- Get Real
- Indy Love Train (monthly homeless ministry in downtown Indianapolis)

These initiatives currently involve only a few individuals and interest to expand has not been successful for various reasons.

Ideas generated from all the discussions:

Become involved in poverty, homelessness, and jobs in Hendricks County through Family Promise

Expand our presence in domestic violence through Sheltering Wings

Education and job training resources for Family Promise and Sheltering Wings; free education that people don't know about.

Since many of our current mission efforts involve families, this section was incorporated into the three primary areas to be focused on during 2020.